




FEEDINGTM
AMERICA
Kentucky's Heartland

2018-2019
Annual Report



Mission

To serve those in need by acquiring and distributing donated food, grocery items and government commodities through our member network of charitable agencies in 42 Kentucky counties.



Vision

No one will go to bed hungry in our service area.



Message from Executive Director, Jamie Sizemore

I am pleased to present our 2018-2019 Annual Report highlighting our significant accomplishments and challenges over the past fiscal year.

We continued to break year-over-year records each month in the number of pounds and meals distributed in the 42 counties covered by Feeding America, Kentucky's Heartland. Most of the additional food came from the Trade Mitigation Program implemented by the US to assist our farmers suffering to trade retaliation by foreign nations.



Due to the increase in USDA commodities, we closed out our fiscal year in June distributing 13.5 million meals to those in need. This was a significant increase over the prior year of two plus million pounds. Our USDA Senior Commodity Program expanded this year by distributing 100,304 boxes to assist 8,345 low-income seniors. The Backpack program, which provides a bag of 12-15 kid-friendly food items to school-aged children each weekend, continued to thrive by serving 5,500 children this past school year throughout 34 counties in our coverage area.

With the increase of perishable foods like meat, dairy, and produce through the USDA and programs like Farms to Food Banks, FAKH added 236 "Just In Time Deliveries" to our partner agencies so clients could have healthier food options. We also conducted 107 Mobile Food Pantries in food deserts across our coverage area providing enough food for over 461,000 meals to our neighbors in need.

Due to all this growth, expansion of our facilities was necessary to keep up with demand. We added an additional 12,000 square feet to our main warehouse in November, and a new 1,525 square foot cooler in June to accommodate the wonderful increase of fresh produce. Both of these additions remain full with an abundance of great food options.

We also faced many challenges in our quest to serve those who are food in-secure. As food manufacturers become more efficient, donations have declined 22%, and will continue a downward trend. Due to the changes in the new tax laws, individual charitable donations have dipped, forcing us to look for other funding sources. But with these challenges and more, our staff continued to persevere in finding ways to serve those who need us most.

Our accomplishments listed above would not be possible without the many volunteers who so generously gave of their time. We saw the majority of those volunteers at our FAKH Volunteer Center each week sorting, labeling, and packing food to be distributed. This fiscal past year, 3,992 volunteers gave 25,929 hours of their time which equates to approximately twelve full-time staff members. There were also hundreds of additional volunteers who worked with our partner agencies, assisted at mass distributions, and mobile food pantries because they knew struggling children, seniors and families were in great need.

Whether you are a volunteer, a donor, or both, we can all take pride in knowing that we are making a difference in the lives of those who are hungry. These struggling children, seniors, and families are counting on us to help fill empty plates and empty stomachs. Thank you for being a part of our one team with one mission - to end hunger one helping at a time.



Message from Board President, Tim Hagan

My inaugural year as board president of Feeding America, Kentucky's Heartland has proven to be as rewarding as I imagined it to be. I feel sure our new Executive Director, Jamie Sizemore, would share my sentiments. We are privileged to be part of an organization which strives to eliminate food insecurities in our communities.



FAKH, along with thousands of dedicated volunteers and our corporate partners, continues to take action in making a substantial impact in the lives of those who hunger: the elderly, the helpless child, the ill, the single parent, the unemployed, the list goes on and on.

We can end hunger one action at a time: every volunteer effort counts, every food drive, every pledge, every fundraiser, every share counts, every re-tweet, every donation, every meal counts ... every action counts.

As I scroll through our social media platforms and see the outpouring of support, I am truly humbled and forever impacted.

Mother Teresa said it best: "If you can't feed a hundred people, then just feed one."

FAKH **can** feed a hundred people and will continue to strive to increase the numbers fed with your generous support. May God continue to bless our staff, supporters, and those we nourish through difficult times.



Board Members

Tim Hagan, Chair
Mike Biggs, Vice Chair
Sherry Powers, Secretary
Karuu Njogu, Treasurer

Hartlage Mgmt. Co.
Retired Corporate Executive
Bluegrass Cellular
Woodforest Bank

Todd Berger, Modern Plating
Carol Brown, Spectrum
Taylor Hayes, Retired Newspaper Publisher/CEO
Jeremy Hinton, Business Owner
Rebecca Loyall, Community Volunteer
Jennifer Maddux, Planters Bank

Wes Mudd, WesBanco
Chris Tompkins, Engineer
Jim Weise, Retired Army Attorney
Raffo Wimsett III, Town & Country Bank
Kris Wood, ECTC

Staff Members

Gary Miles, Executive Director (thru December 2018)
Jamie Sizemore, Executive Director (beginning January 2019)
Kathy Dile, Director of Finance & Administration
Milissa French, Director of Agency Services & Programs
Wayne Tyree, Director of Operations
Amber Lyvers, Director of Development & Volunteer Services

Vicki Abshire, Volunteer Center Manager
Lynn Bauer, Development Administrative Asst.
Veronica Bigler, Warehouse Manager
Greg Brackett, Driver
Gordon Burba, Driver
Sylvester Cole, Driver
Garrett Goatley, Team Support Associate
Ryan Hart, Driver
Blake Langdon, Team Support Associate

Janet Logsdon, Agency Services, Administrative Asst.
Erik Marchand, Team Support Associate
Danny Marcum, Driver
Tim Mathers, Food Procurement & Transportation Manager
Arnel Megino, Child & Senior Programs Coordinator
Monica Ruehling, Marketing & Communications Coord.
Adam Spires, Inventory Control & Retail Specialist
Billy Williams, Team Support Associate

FAKH Programs

❖ **Donated Food/Grocery Distribution**

Provide donated food and grocery items to 229 partner agencies in 42-county service area in central, south central, and western Kentucky.

❖ **Mobile Food Pantry Program (MFP)**

Directly distribute fresh food, produce, and other foods to underserved regions in our service area.

❖ **Commodity Supplemental Food Program (CSFP)**

Distribute monthly supplemental food box to 8,345 income eligible seniors, age 60 and over, throughout our service area.

❖ **Temporary Emergency Food Assistance Program (TEFAP)**

Distribute government commodity foods through our partner agency network for individuals and families in need.

❖ **BackPack Program**

Partner with county coordinating agencies and school systems to provide 5,500 school-age children in need with a bag of 12-15 take home, kid friendly, items on the weekends when school meals are unavailable.

❖ **Farms to Food Bank**

Receive fresh, local produce from farmers during the peak growing season. Farmers are paid by monies allocated through state budget and coordinated by Feeding Kentucky, the statewide association of food banks.

❖ **Retail Store Pick-Up**

Corporate retail and grocery store partners donate their excess, unsaleable food to food banks.

❖ **Purchasing Cooperative**

Purchase large quantities of food at a discounted price and pass along savings to our partner agencies in order to stock their shelves.

❖ **Serving Up Fresh**

Partnerships purchase fresh produce to distribute during off-season growing times.

❖ **Disaster Relief**

Partner with disaster relief agencies to provide emergency foods in the event of a disaster.



FAKH Program Accomplishments

- ❖ Distributed 16,276,855 lbs. of food and grocery items (donated, government and purchased) to 229 non-profit, charitable partner agencies to feed those in need in 42 Kentucky counties.
- ❖ Efficiently distributed product at just 11.3 cents/lb.
- ❖ Efficiently use each donated \$1 to distribute 9 pounds of food, distribute 7.5 meals, \$15 worth of food (retail value).
- ❖ Provided emergency food to approximately 174,500 struggling Kentuckians.
- ❖ Distributed 186,511 Backpack food bags to 5,500 at-risk school-age children every week during school year in 34 Kentucky counties.
- ❖ Distributed 100,304 boxes of commodity foods to low-income seniors.
- ❖ Distributed 592,575 pounds of fresh produce from local Kentucky farmers through the Farms to Food Banks program.
- ❖ Retrieved and redistributed 2,775,673 lbs. of unsalable product through Retail Store Pick-Up Program.



Feeding Those in Need ...



'I am a stay at home mother of four and my husband's income places us over (just over) qualifications for food stamps. This program helps to supplement many meals.'

-Julie, Hancock County resident



'Due to a back injury, I am now disabled, and me and my wife often struggle to meet their basic needs. We receive assistance every few months from University Church of Christ in Bowling Green. It (food pantry) is very valuable. Without it, we would be really hungry at times.'

*-Kenny and Kelly M.,
Warren County residents*

'A student of mine receives food through the Backpack program. She also has a younger brother who now receives also receives food through the Backpack Program.'



When the older sister was in preschool class, sometimes the Backpack food would come after she went home for the day. We would make a home visit to deliver the food on Friday since preschool does not have classes on Fridays.

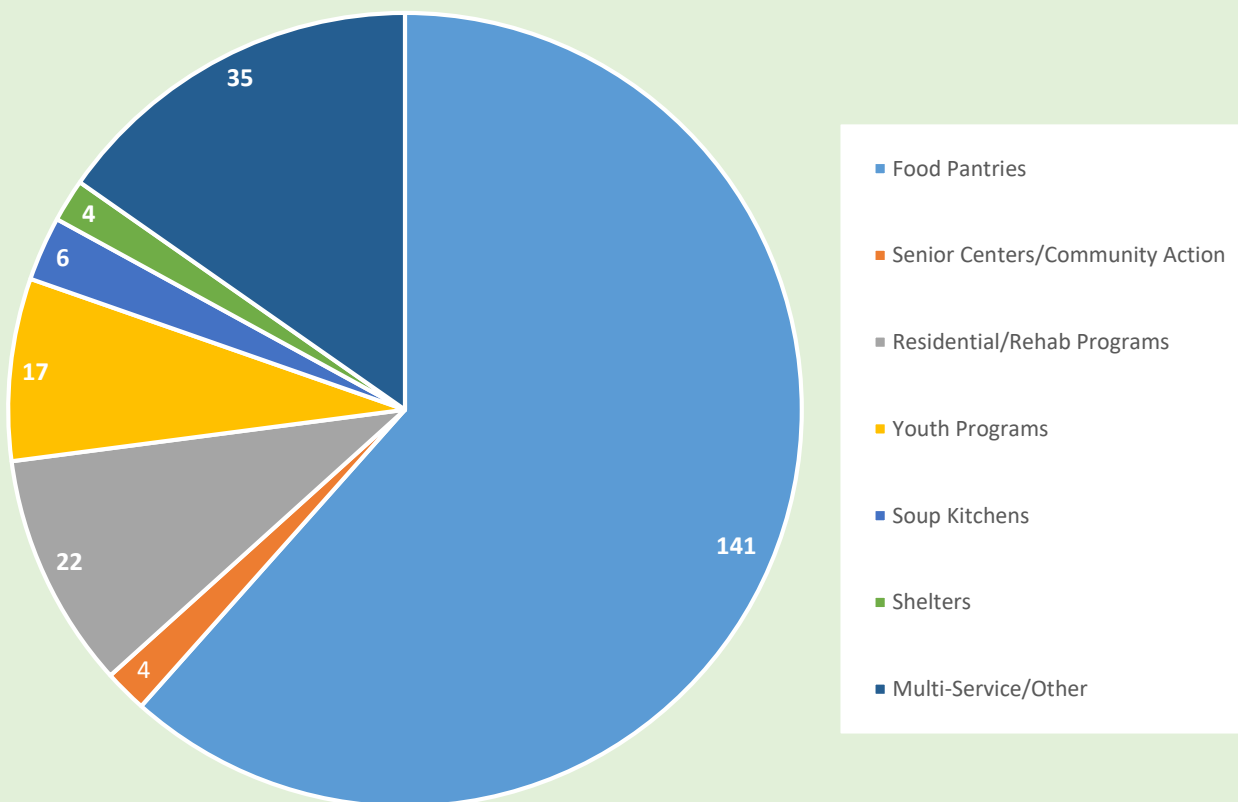
On one of those Fridays, I took the bag of food to her house. The child jumped up and down, gave me a hug, and took the food to the kitchen. She proceeded to go through the bag and get something to eat. Her mother stated the little girl always worries about not getting her bag each week and just lights up when she's able to get food out for herself.'

-Larue County teacher



Network of Partner Agencies

229 Partner Agencies in 42 Kentucky counties serving
over 174,500 people per year



Volunteers

The most treasured resource at Feeding America, Kentucky's Heartland is our volunteers. Each year, community individuals, families, and groups donate their time to do different tasks at our Volunteer Center in Elizabethtown – from sorting food to repackaging to filling bags and boxes. Volunteers also help with our agency's work to distribute food to those in need out in one of our 42 service counties. Whether at our Volunteer Center or out assisting a partner agency, our caring volunteers work to be part of the solution in the fight against hunger.

Volunteer Hours for FY 2018-19: 25,929

of Volunteers: 3,992



Financials

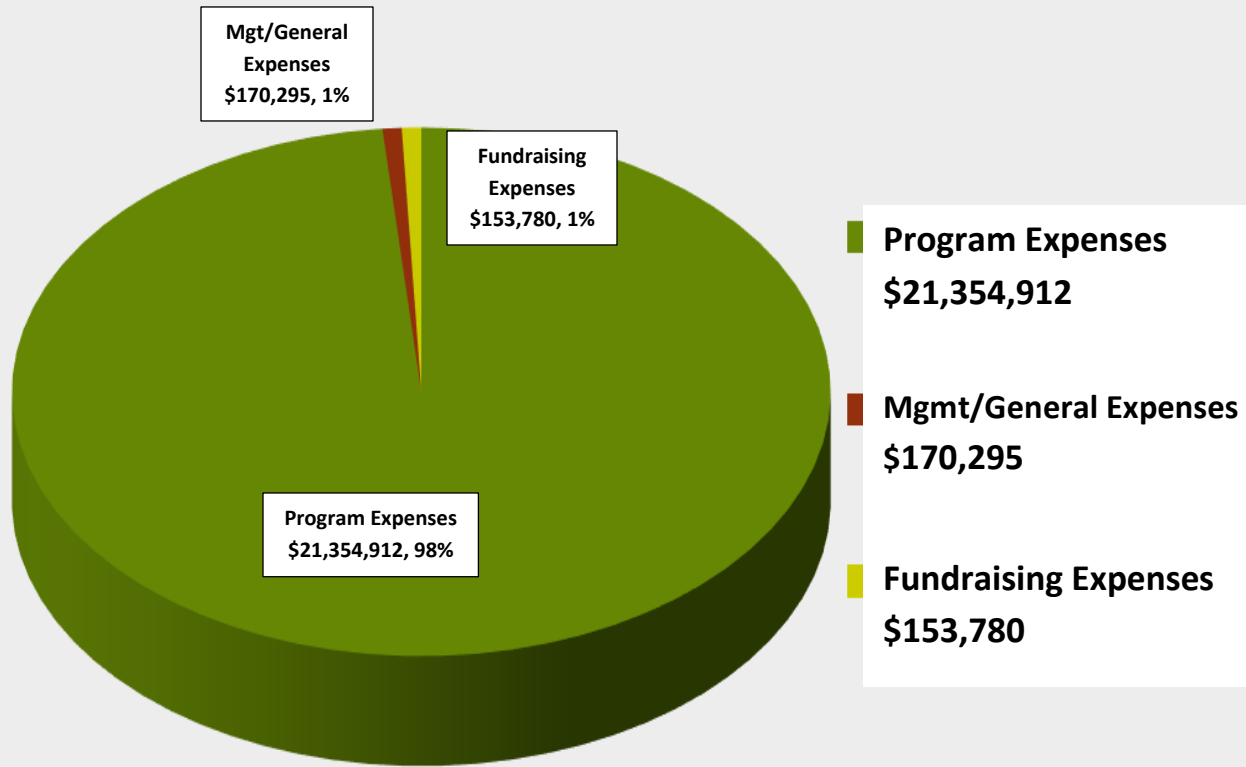
SUMMARY OF REVENUE/SUPPORT

USDA/CSFP Distribution Fees	\$912,686
Shared Maintenance Fees.....	\$195,855
Contributions and Grants	\$947,588
Food Purchase Program & Delivery Fees	\$599,195
Other Revenue (interest, pallet and cardboard sales).....	\$35,440
Donated Food.....	<u>\$19,524,712</u>
TOTAL REVENUE/SUPPORT	\$22,215,476

SUMMARY OF EXPENSES:

Food Distributed	\$19,220,629
Food Acquisition Costs.....	\$891,383
Total Employee Costs	\$937,375
Occupancy.....	\$99,791
Supplies	\$90,076
Food Delivery Costs/Travel	\$102,124
Equipment/Bldg. Maintenance Repair	\$70,462
Development/Fundraising	\$72,060
Dues.....	\$23,202
Interest Expense.....	\$24,650
Other (Acct., Printing, Postal, etc.).....	\$53,698
Depreciation	<u>\$93,537</u>
TOTAL EXPENSES	\$21,678,987

Functional Expenses



Net Assets:

Beginning Net Assets.....	\$4,999,939
Ending Net Assets	\$5,536,428

**includes value of donated food inventory*



313 Peterson Drive (Main Office & Warehouse)

300 Peterson Drive (Volunteer Center)

Elizabethtown, KY 42701

Phone 270-769-6997/270-735-1407

Fax 270-769-9340

www.feedingamericakky.org

